

Vodafone  
Park Master Rear  
094/194/294

Installer Manual

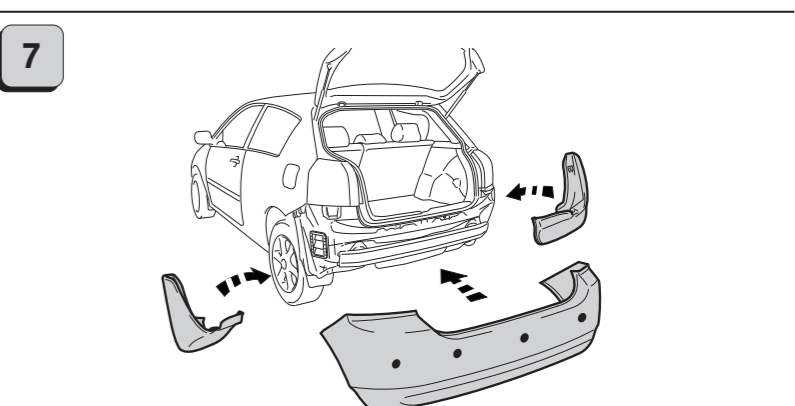
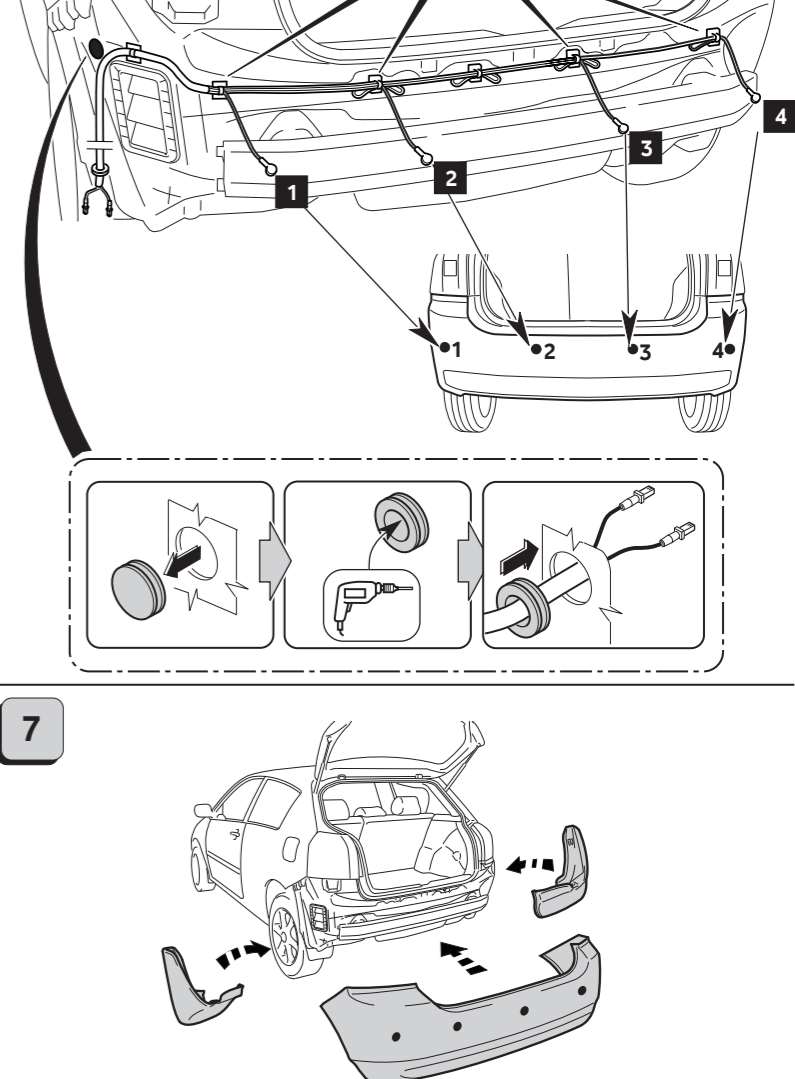
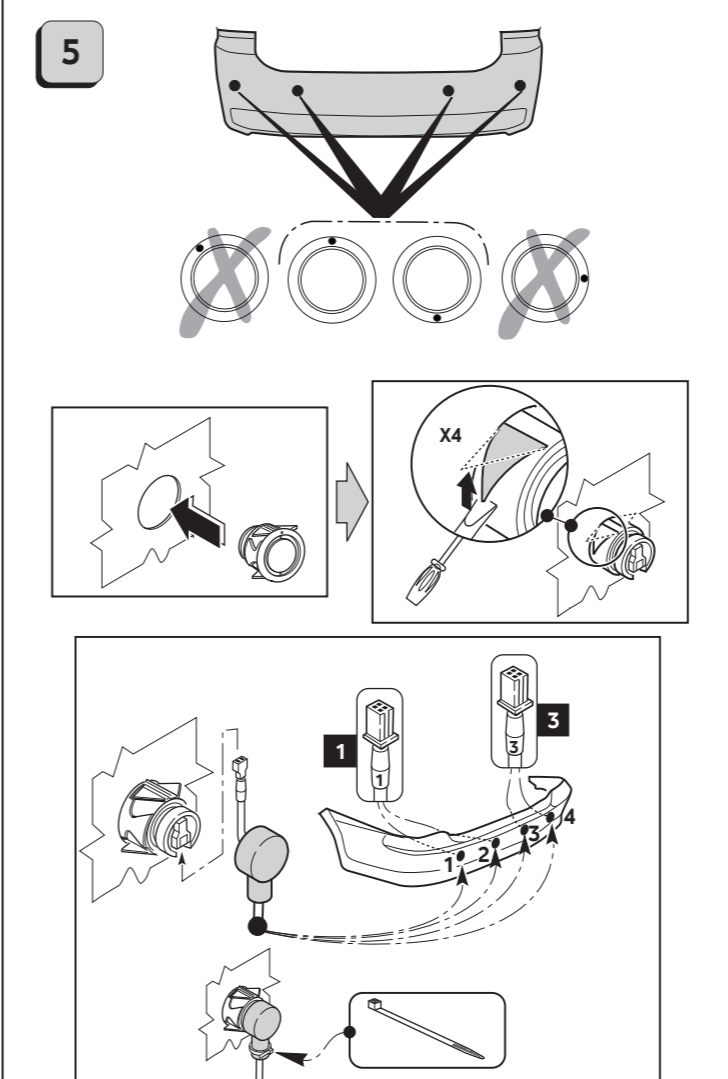
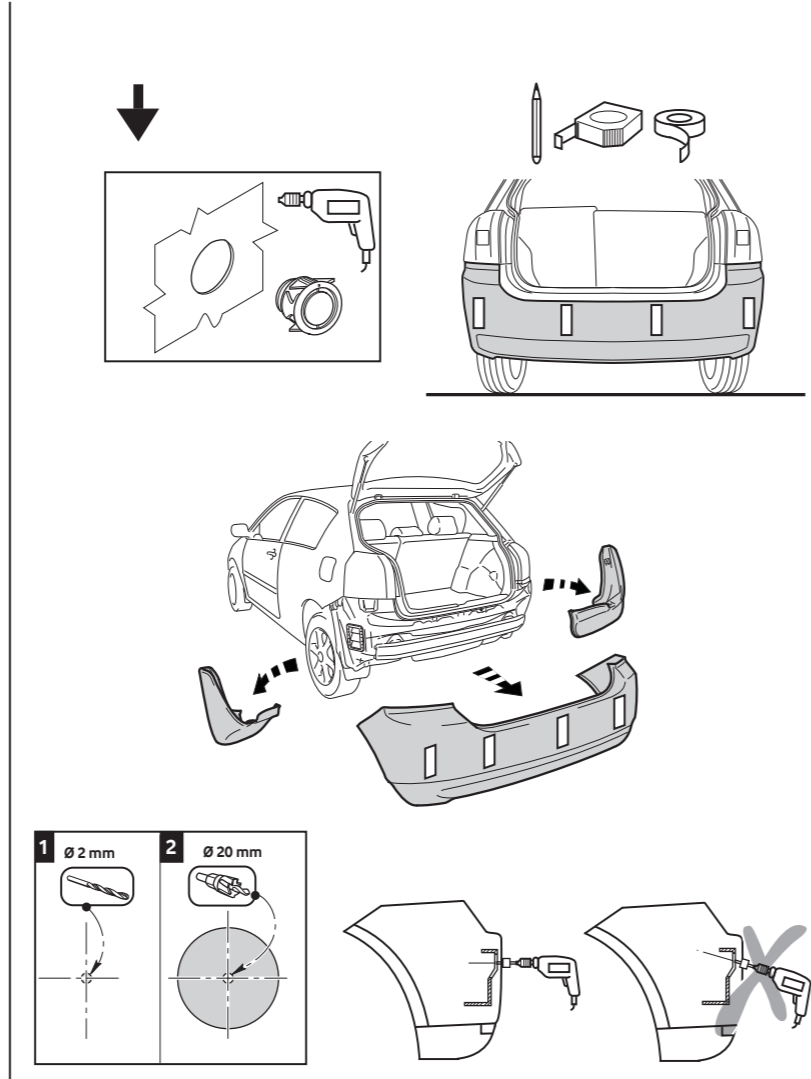
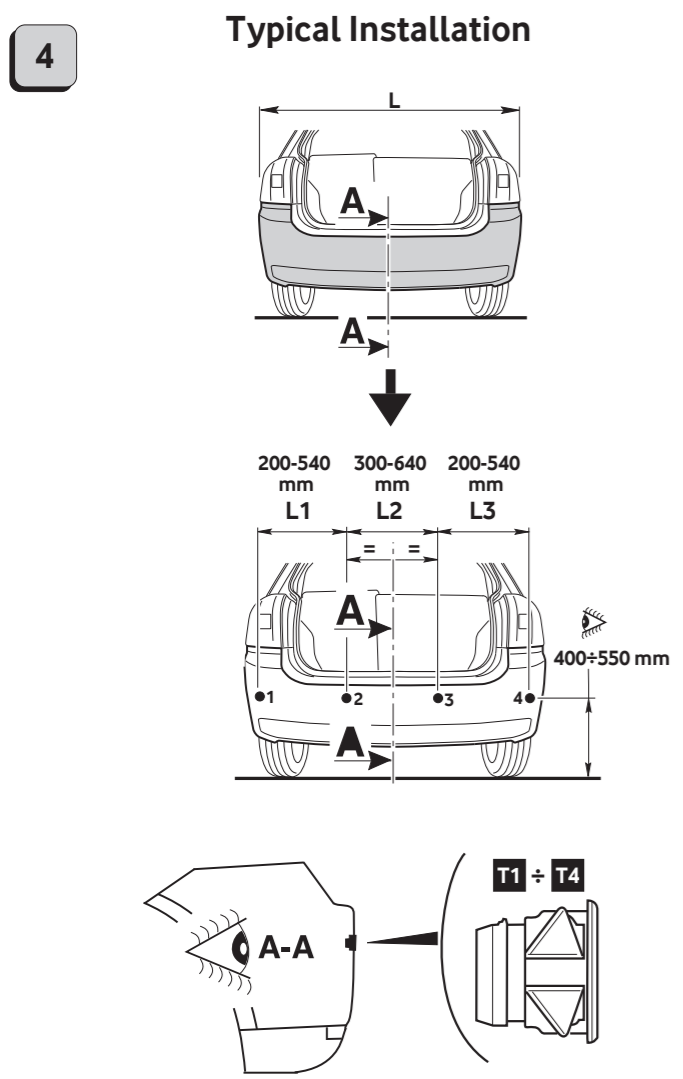
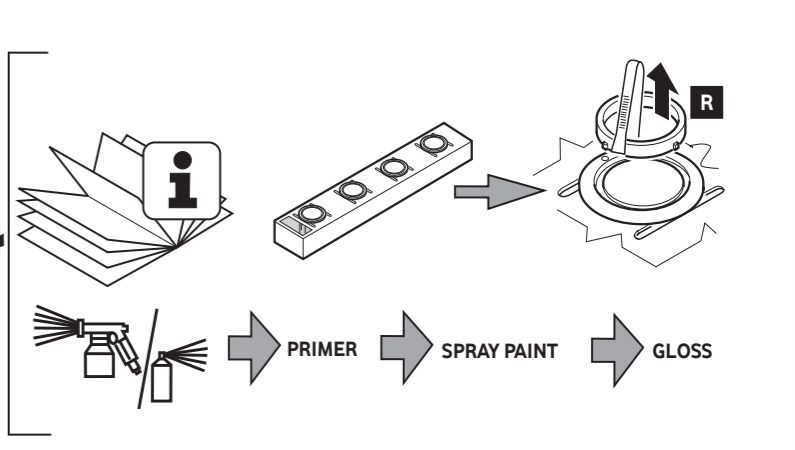
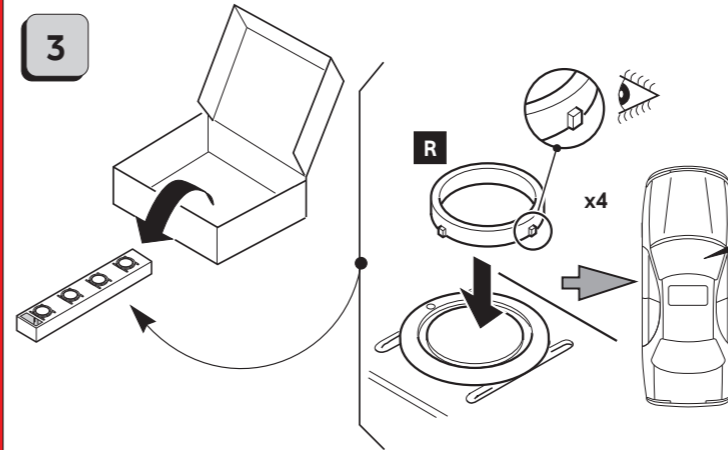
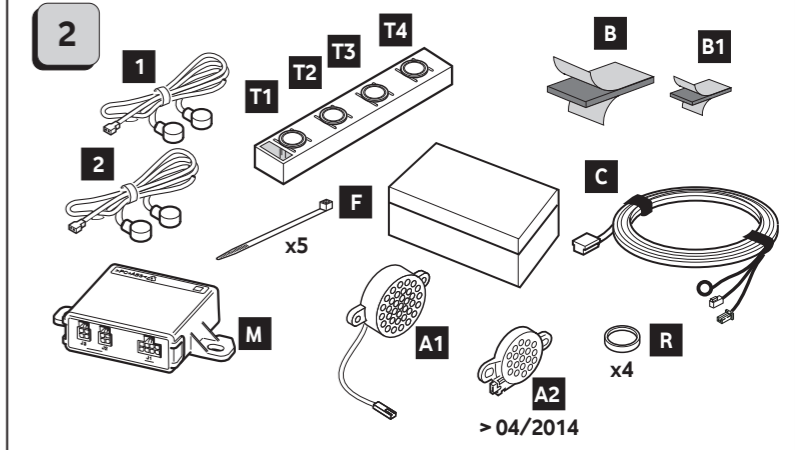
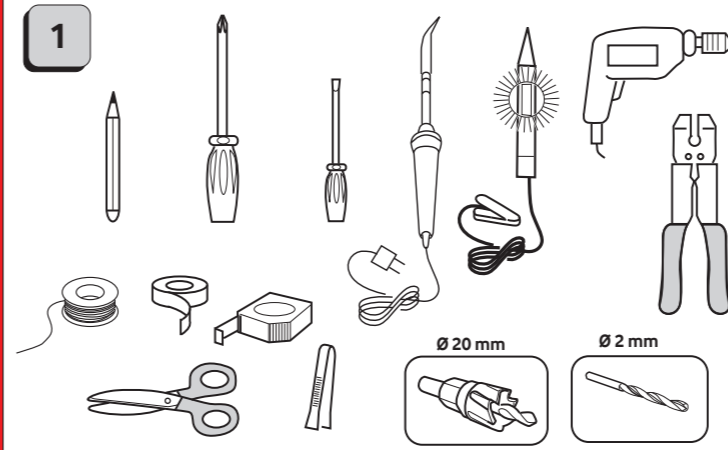
The future is exciting.  
Ready?

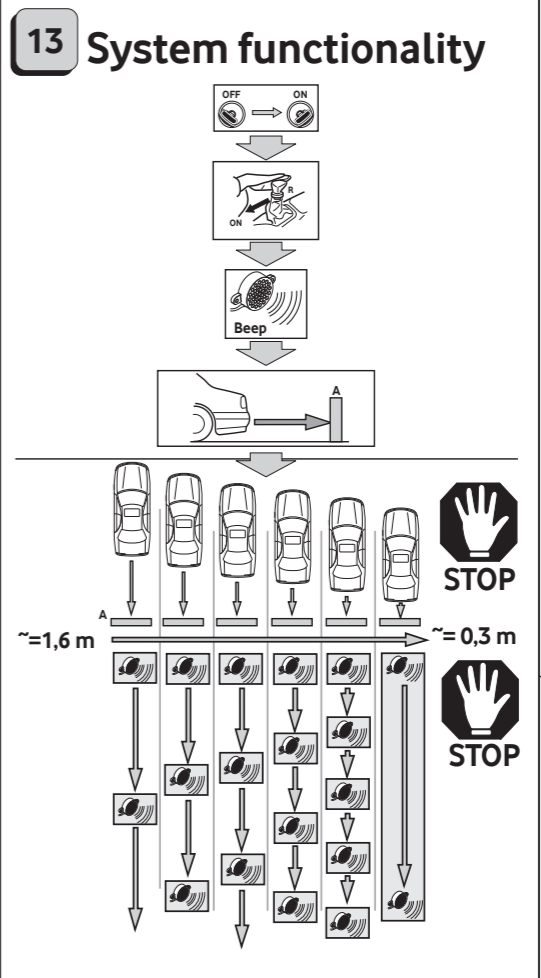
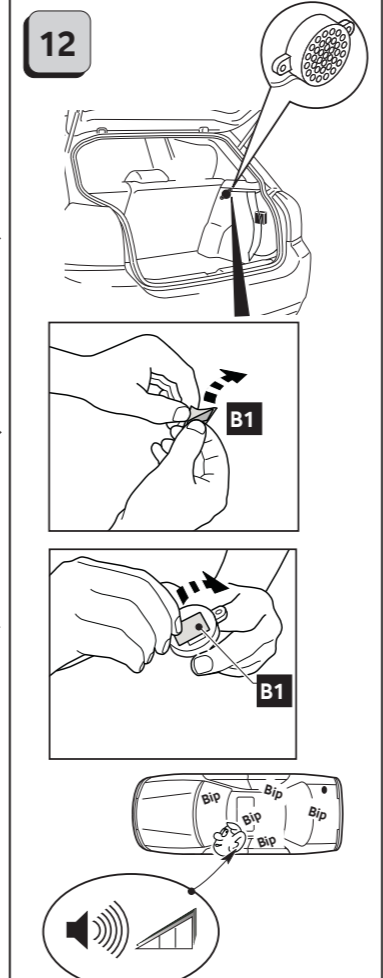
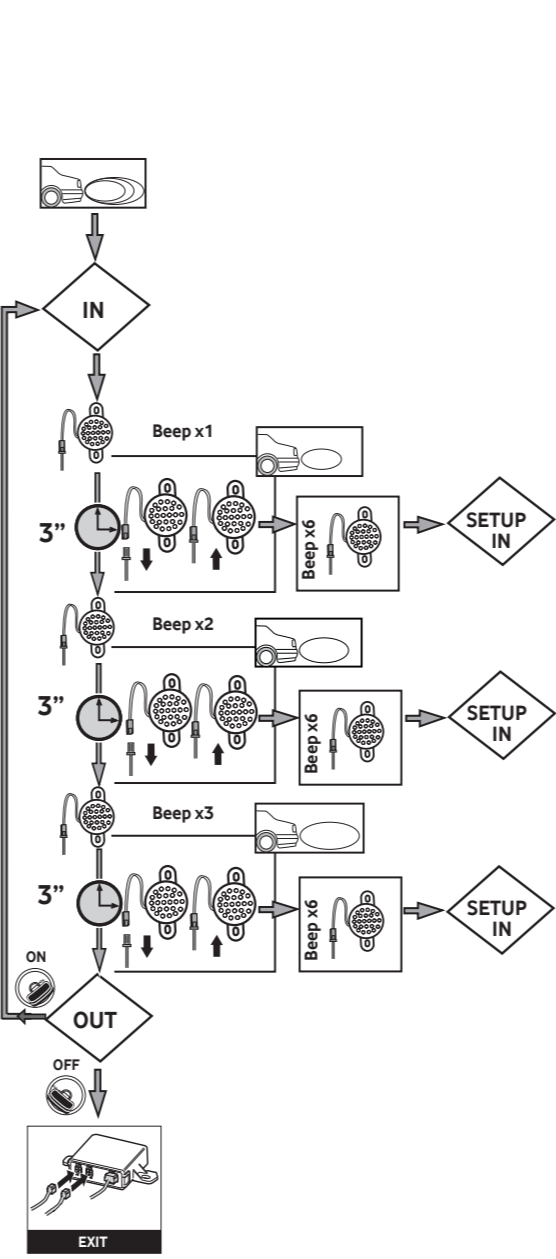
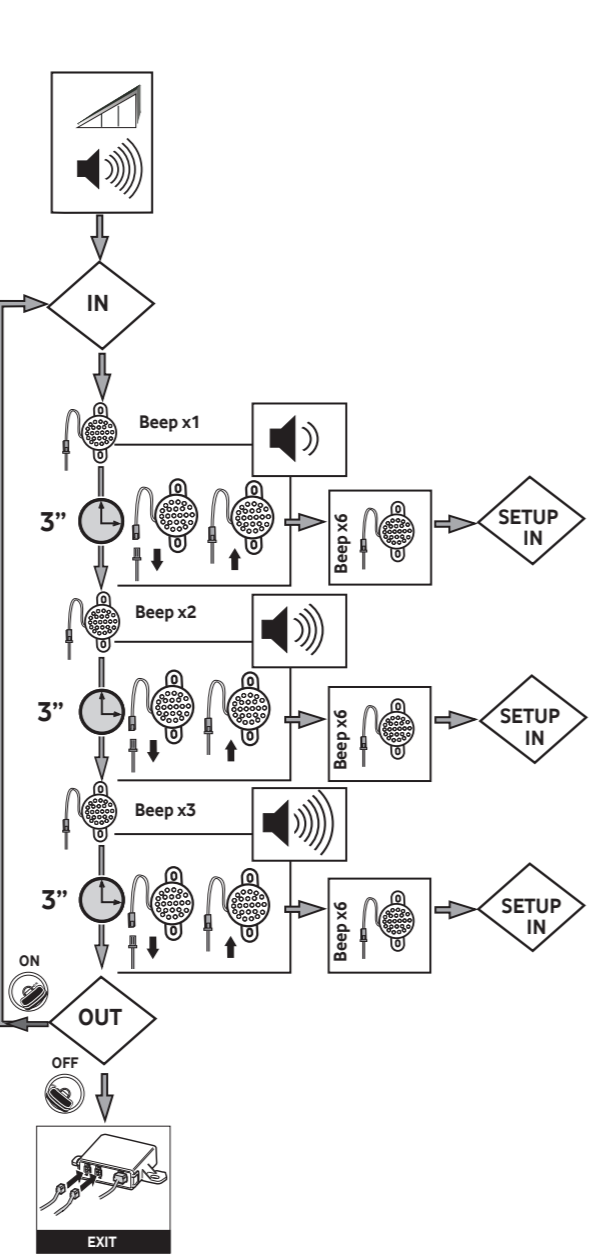
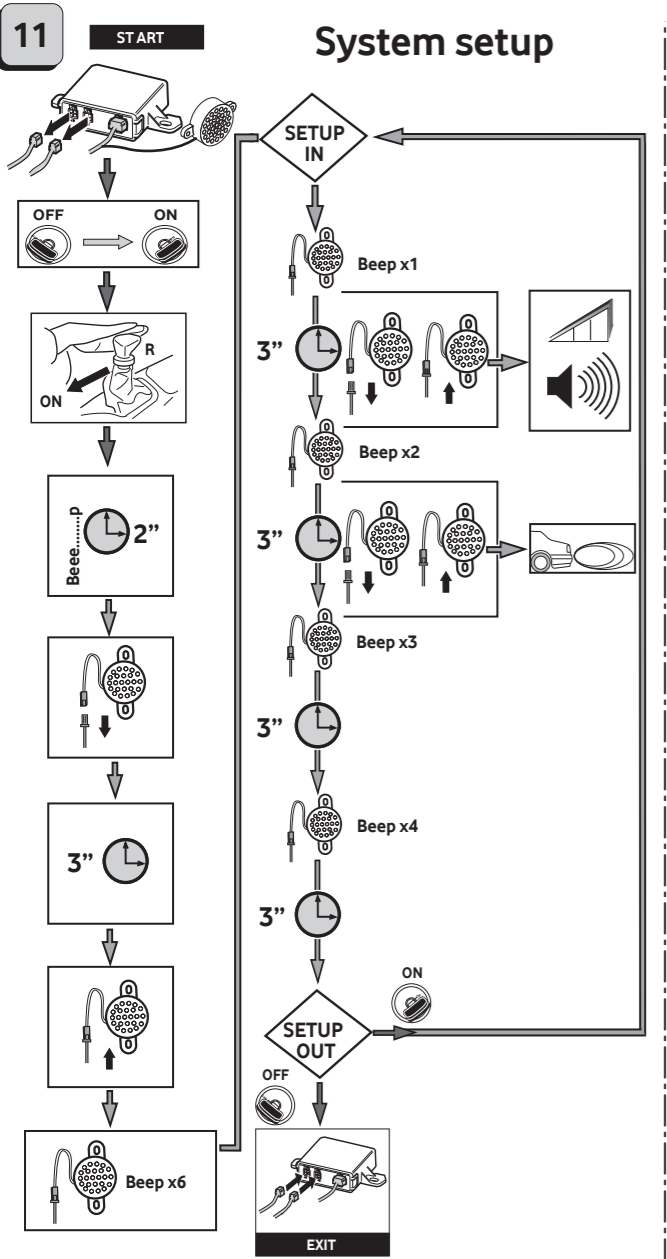
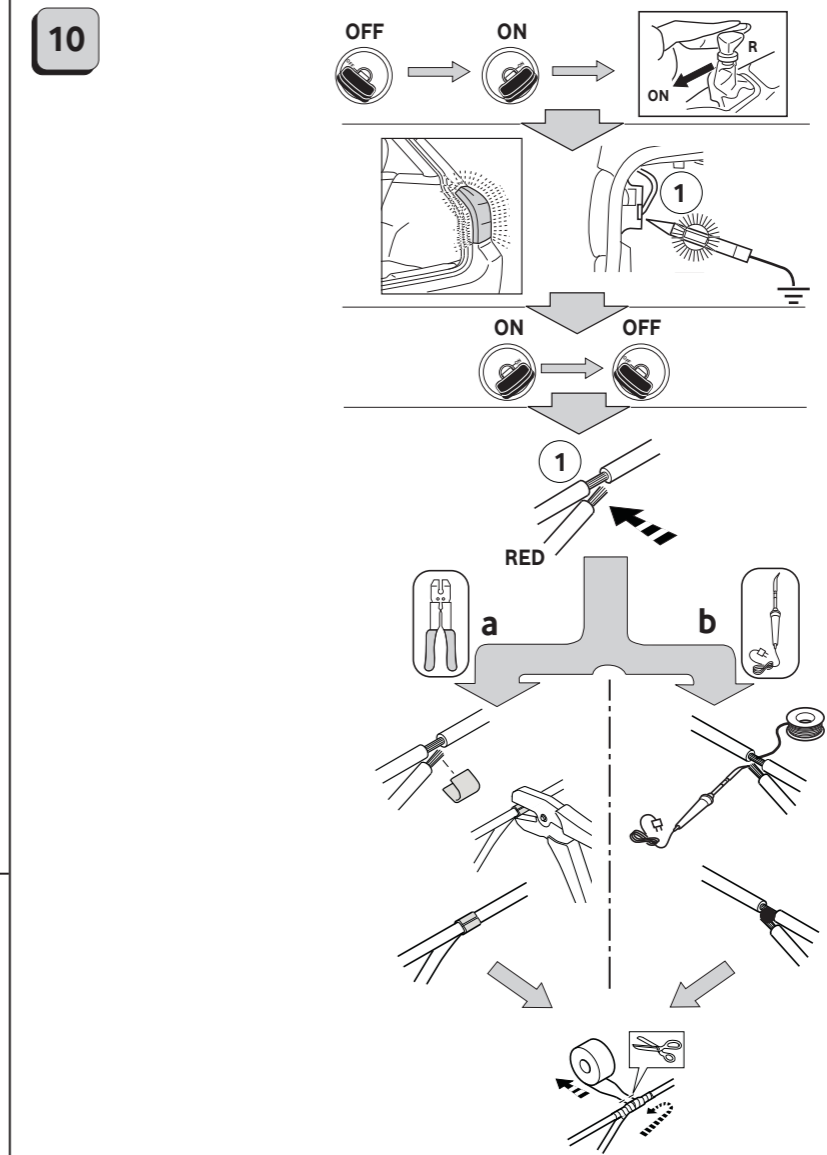
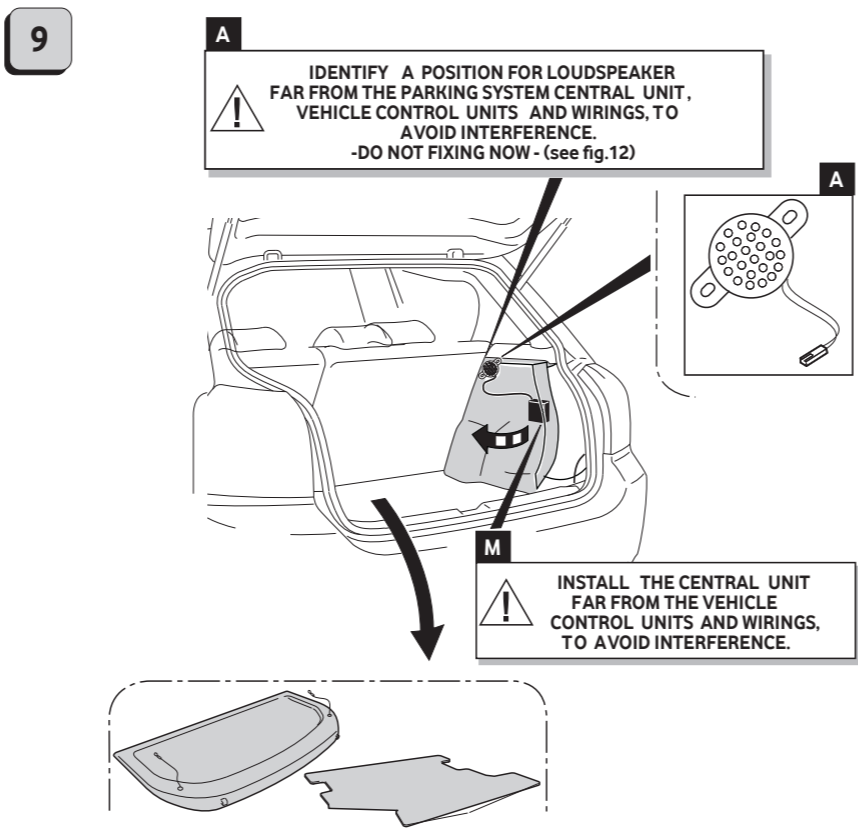
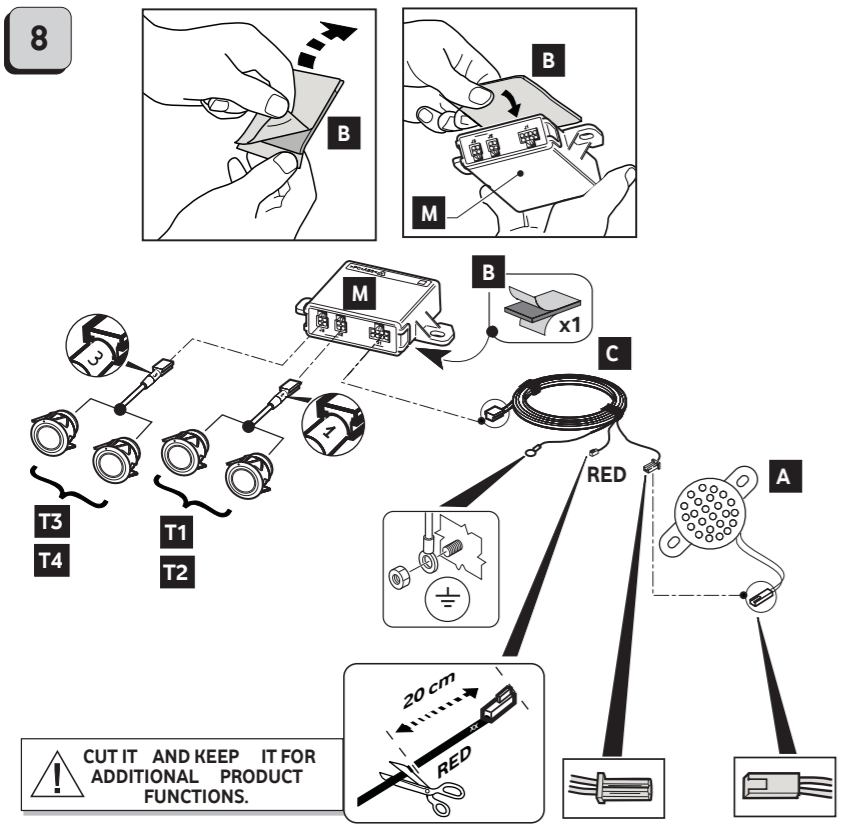


06DE3782E - 09/19

Vodafone Automotive SpA  
via Astico 41 - 21100 VARESE - ITALY  
automotive.vodafone.com

The future is exciting.  
Ready?





**12 VDC.**

**+15/54**

**A < 30 mA typ.**

**-40 °C ÷ +85 °C**

ELECTRICAL/ELECTRONIC SUB-ASSEMBLY WAS APPROVED WITH REGARD TO: E/CE/324-E/CE/TRANS/505 Add.9/Rev.3 Regulation No. 10 UNIFORM PROVISIONS CONCERNING THE APPROVAL OF VEHICLES WITH REGARD TO ELECTROMAGNETIC COMPATIBILITY.

**FOR ADDITIONAL FUNCTIONS SEE "INSTALLATION AND CONFIGURATION GUIDE" ON VODAFONE AUTOMOTIVE SITE.**